

*!9*

*Michael Frank*

---

*Notenwerk*

*[www.michael-frank.eu](http://www.michael-frank.eu)*

## **Impressum**

Titel: !9

Autor und Komponist: Michael Frank, [www.michael-frank.eu](http://www.michael-frank.eu), PND 142082090, <http://d-nb.info/gnd/142082090>

Verlag und Druck: Michael Frank, [www.michael-frank.eu](http://www.michael-frank.eu), <http://d-nb.info/dnbn/330273191>

Umschlaggestaltung: Michael Frank, [www.michael-frank.eu](http://www.michael-frank.eu)

Ort und Jahr: Neuruppin, 2001

URN: urn:nbn:de:0275-2011042088

Alle Rechte vorbehalten.

# !9

Michael Frank  
www.michael-frank.eu

1

1: Gesang

2: Klavier

3: E-Gitarre

4: Bass

5: Xylophon

6: Schlagzeug

Detailed description: This block contains the first three measures of a musical score. It features six staves. The top staff (1: Gesang) is empty. The second staff (2: Klavier) is also empty. The third staff (3: E-Gitarre) shows a melodic line starting in the second measure. The fourth staff (4: Bass) shows a simple bass line. The fifth staff (5: Xylophon) shows a rhythmic pattern with rests. The sixth staff (6: Schlagzeug) shows a drum pattern with eighth notes.

4

1: Gesang

2: Klavi

3: E-Git

4: Bass

5: Xylof

6: Schla

Detailed description: This block contains measures 4 through 7 of the musical score. The top staff (1: Gesang) remains empty. The second staff (2: Klavi) shows a complex piano accompaniment with chords and moving lines. The third staff (3: E-Git) continues the melodic line from the previous section. The fourth staff (4: Bass) continues the bass line. The fifth staff (5: Xylof) continues the rhythmic pattern. The sixth staff (6: Schla) continues the drum pattern, which becomes more active in the later measures.

8

1: Gesai

2: Klavi

3: E-Git

4: Bass

5: Xylor

6: Schla

Detailed description: This system contains measures 8 through 12. It features six staves. Staff 1 (Vocal) is mostly silent with a few notes. Staff 2 (Piano) has a complex accompaniment with chords and moving lines. Staff 3 (Electric Guitar) has a melodic line with some bends. Staff 4 (Bass) has a steady eighth-note bass line. Staff 5 (Xylophone) has sparse notes. Staff 6 (Drums) has a consistent rhythmic pattern of eighth notes.

13

1: Gesai

2: Klavi

3: E-Git

4: Bass

5: Xylor

6: Schla

Detailed description: This system contains measures 13 through 17. Staff 1 (Vocal) has a melodic line with some grace notes. Staff 2 (Piano) continues with a complex accompaniment. Staff 3 (Electric Guitar) has a melodic line. Staff 4 (Bass) has a steady eighth-note bass line. Staff 5 (Xylophone) has sparse notes. Staff 6 (Drums) has a consistent rhythmic pattern of eighth notes.

18

1: Gesai

2: Klavi

3: E-Git

4: Bass

5: Xylor

6: Schla

23

1: Gesai

2: Klavi

3: E-Git

4: Bass

5: Xylor

6: Schla

28

1: Gesai

2: Klavi

3: E-Git

4: Bass

5: Xylor

6: Schla

31

1: Gesai

2: Klavi

3: E-Git

4: Bass

5: Xylor

6: Schla

34

1: Gesai

2: Klavi

3: E-Git

4: Bass

5: Xylor

6: Schla

36

1: Gesai

2: Klavi

3: E-Git

4: Bass

5: Xylor

6: Schla

38

1: Gesai

2: Klavi

3: E-Git

4: Bass

5: Xylor

6: Schla

40

1: Gesai

2: Klavi

3: E-Git

4: Bass

5: Xylor

6: Schla



42

1: Gesai

2: Klavi

3: E-Git

4: Bass

5: Xylor

6: Schla

44

1: Gesai

2: Klavi

3: E-Git

4: Bass

5: Xylor

6: Schla

46

1: Gesai

2: Klavi

3: E-Git

4: Bass

5: Xylor

6: Schla

49

1: Gesai

2: Klavi

3: E-Git

4: Bass

5: Xylor

6: Schla

54

1: Gesai

2: Klavi

3: E-Git

4: Bass

5: Xylor

6: Schla

59

1: Gesai

2: Klavi

3: E-Git

4: Bass

5: Xylor

6: Schla

64

1: Gesai  
2: Klavi  
3: E-Git  
4: Bass  
5: Xylor  
6: Schla

This system contains measures 64 through 68. It features six staves: 1. Gesai (Vocal line), 2. Klavi (Piano accompaniment), 3. E-Git (Electric guitar), 4. Bass (Bass line), 5. Xylor (Xylophone), and 6. Schla (Shamisen). The music is in a 4/4 time signature. The vocal line starts with a half note, followed by quarter notes and eighth notes. The piano accompaniment consists of chords and arpeggiated figures. The electric guitar and bass lines provide a rhythmic foundation with eighth and quarter notes. The xylophone and shamisen parts have a repetitive, rhythmic pattern.

69

1: Gesai  
2: Klavi  
3: E-Git  
4: Bass  
5: Xylor  
6: Schla

This system contains measures 69 through 73. It features the same six staves as the previous system. The vocal line (Gesai) begins with a quarter rest, followed by quarter and eighth notes. The piano accompaniment (Klavi) continues with chords and arpeggiated patterns. The electric guitar (E-Git) and bass (Bass) lines maintain their rhythmic patterns. The xylophone (Xylor) and shamisen (Schla) parts also continue their respective rhythmic motifs.

73

1: Gesai

2: Klavi

3: E-Git

4: Bass

5: Xylor

6: Schla

76

1: Gesai

2: Klavi

3: E-Git

4: Bass

5: Xylor

6: Schla

78

1: Gesai

2: Klavi

3: E-Git

4: Bass

5: Xylor

6: Schla

80

1: Gesai

2: Klavi

3: E-Git

4: Bass

5: Xylor

6: Schla

82

1: Gesai

2: Klavi

3: E-Git

4: Bass

5: Xylor

6: Schla

84

1: Gesai

2: Klavi

3: E-Git

4: Bass

5: Xylor

6: Schla

86

1: Gesai

2: Klavi

3: E-Git

4: Bass

5: Xylor

6: Schla

88

1: Gesai

2: Klavi

3: E-Git

4: Bass

5: Xylor

6: Schla



90

1: Gesai

2: Klavi

3: E-Git

4: Bass

5: Xylor

6: Schla

93

1: Gesai

2: Klavi

3: E-Git

4: Bass

5: Xylor

6: Schla

98

1: Gesai

2: Klavi

3: E-Git

4: Bass

5: Xylor

6: Schla

103

1: Gesai

2: Klavi

3: E-Git

4: Bass

5: Xylor

6: Schla

108

1: Gesai  
2: Klavi  
3: E-Git  
4: Bass  
5: Xylor  
6: Schla

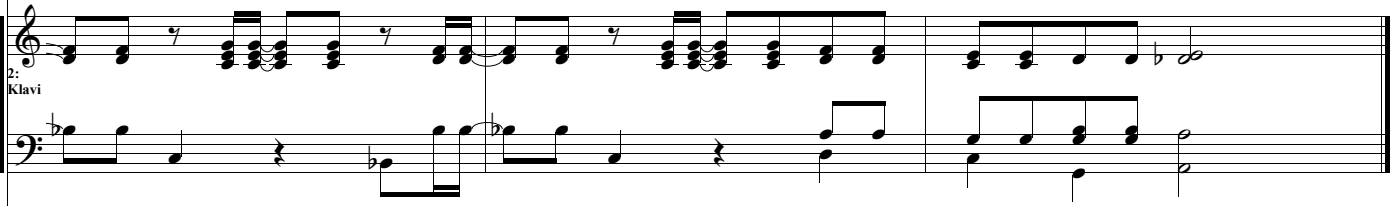
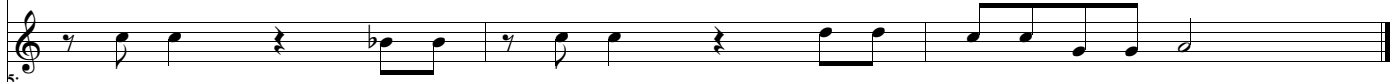
This system contains six staves of music for measures 108-112. Staff 1 (Gesai) is a vocal line in treble clef. Staff 2 (Klavi) is a piano accompaniment in treble clef. Staff 3 (E-Git) is an electric guitar line in bass clef. Staff 4 (Bass) is a bass line in bass clef. Staff 5 (Xylor) is a xylophone line in treble clef. Staff 6 (Schla) is a snare drum line in bass clef.

113

1: Gesai  
2: Klavi  
3: E-Git  
4: Bass  
5: Xylor  
6: Schla

This system contains six staves of music for measures 113-117. Staff 1 (Gesai) is a vocal line in treble clef. Staff 2 (Klavi) is a piano accompaniment in treble clef. Staff 3 (E-Git) is an electric guitar line in bass clef. Staff 4 (Bass) is a bass line in bass clef. Staff 5 (Xylor) is a xylophone line in treble clef. Staff 6 (Schla) is a snare drum line in bass clef.

116

1:  
Gesai2:  
Klavi3:  
E-Git4:  
Bass5:  
Xylor6:  
Schla